

Histogram Start Time 10:58:29 April 20, 2009
 Histogram Finish Time 08:16:31 April 24, 2009
 Number of Intervals 1120 at 5 minutes
 Range Geo :254 mm/s
 Sample Rate 1024sps
 Job Number: 1

Serial Number BE12708 V 8.12-8.0 MiniMate Plus
 Battery Level 6.8 Volts
 Calibration October 1, 2008 by Instanter Inc.
 File Name N708COK1.5HO

Notes

Location:

Client:

User Name:

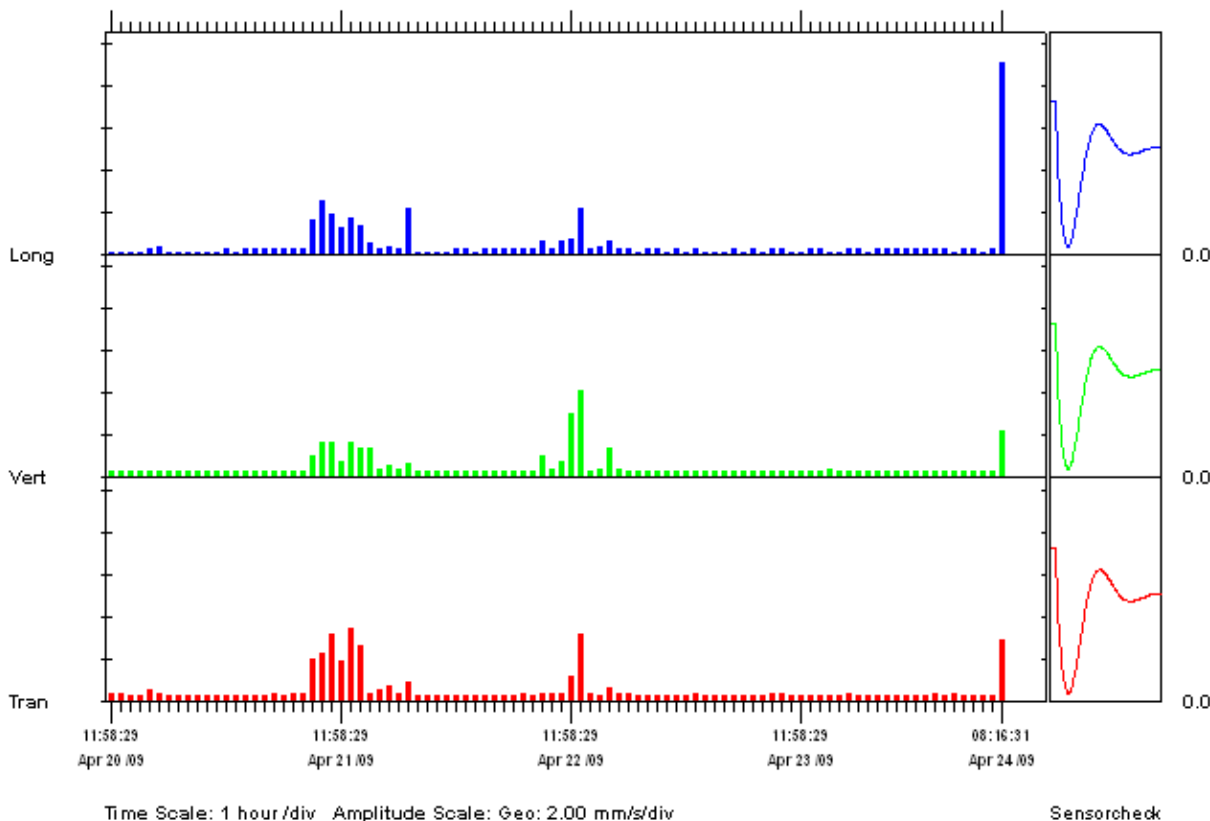
General:

Extended Notes

Post Event Notes

| | Tran | Vert | Long | |
|-----------------|------------|------------|------------|------|
| PPV | 3.43 | 4.06 | 9.14 | mm/s |
| ZC Freq | 85 | >100 | 64 | Hz |
| Date | Apr 21 /09 | Apr 22 /09 | Apr 24 /09 | |
| Time | 12:28:29 | 12:43:29 | 08:16:31 | |
| Sensorcheck | Passed | Passed | Passed | |
| Frequency | 7.3 | 7.3 | 7.4 | Hz |
| Overswing Ratio | 3.9 | 4.1 | 4.1 | |

Peak Vector Sum 9.20 mm/s on April 24, 2009 at 08:16:31



Date/Time Long at 08:16:29 April 24, 2009
 Trigger Source Geo: 5.00 mm/s
 Range Geo :254 mm/s
 Record Time 2.0 sec at 1024 sps
 Job Number: 1

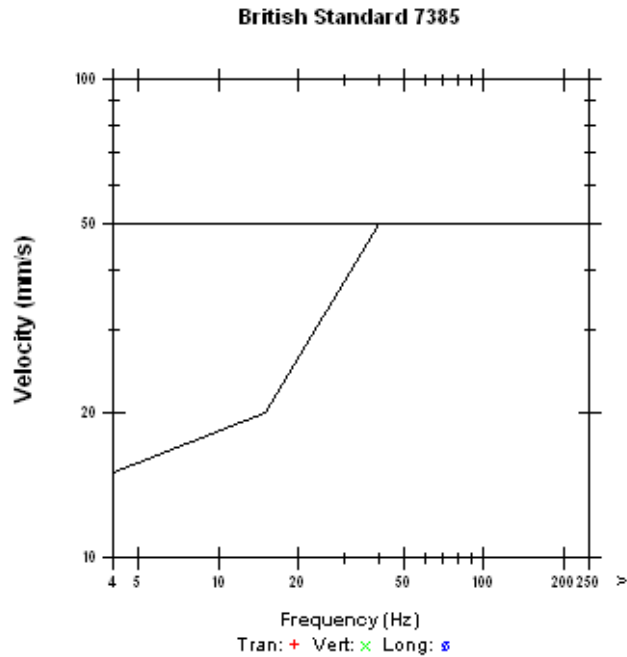
Serial Number BE12708 V 8.12-8.0 MiniMate Plus
 Battery Level 6.8 Volts
 Calibration October 1, 2008 by Instanter Inc.
 File Name N708COR8.BH0

Notes
 Location:
 Client:
 User Name:
 General:

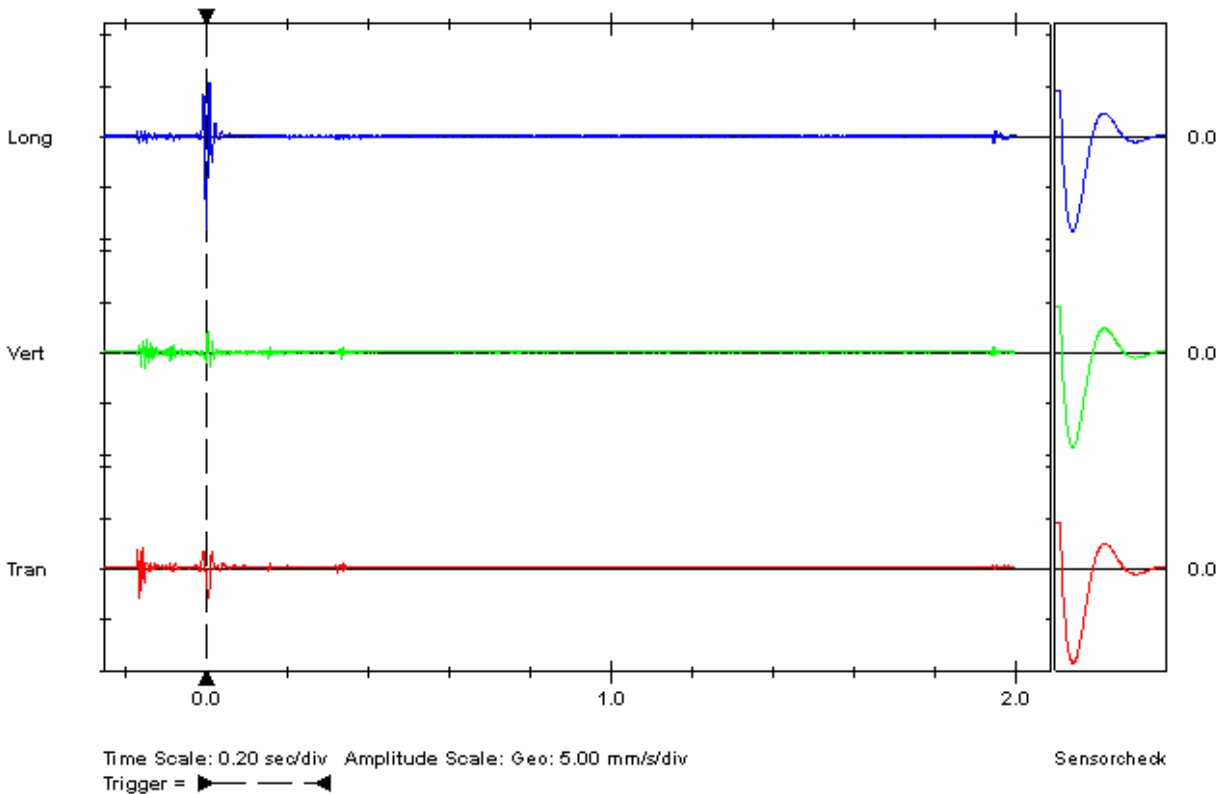
Extended Notes
 Combo Mode April 20, 2009 10:58:28

Post Event Notes

| | Tran | Vert | Long | |
|---------------------|---------|---------|--------|------|
| PPV | 2.92 | 2.16 | 9.14 | mm/s |
| ZC Freq | >100 | 73 | 64 | Hz |
| Time (Rel. to Trig) | -0.162 | 0.005 | 0.002 | sec |
| Peak Acceleration | 0.186 | 0.133 | 0.371 | g |
| Peak Displacement | 0.00974 | 0.00403 | 0.0226 | mm |
| Sensorcheck | Passed | Passed | Passed | |
| Frequency | 7.3 | 7.3 | 7.4 | Hz |
| Overswing Ratio | 3.9 | 4.1 | 4.1 | |



Peak Vector Sum 9.20 mm/s at 0.002 sec



Histogram Start Time 08:21:46 April 24, 2009
 Histogram Finish Time 12:20:58 April 24, 2009
 Number of Intervals 48 at 5 minutes
 Range Geo :254 mm/s
 Sample Rate 1024sps
 Job Number: 1

Serial Number BE12708 V 8.12-8.0 MiniMate Plus
 Battery Level 6.8 Volts
 Calibration October 1, 2008 by InstanTel Inc.
 File Name N708COR8.KA0

Notes

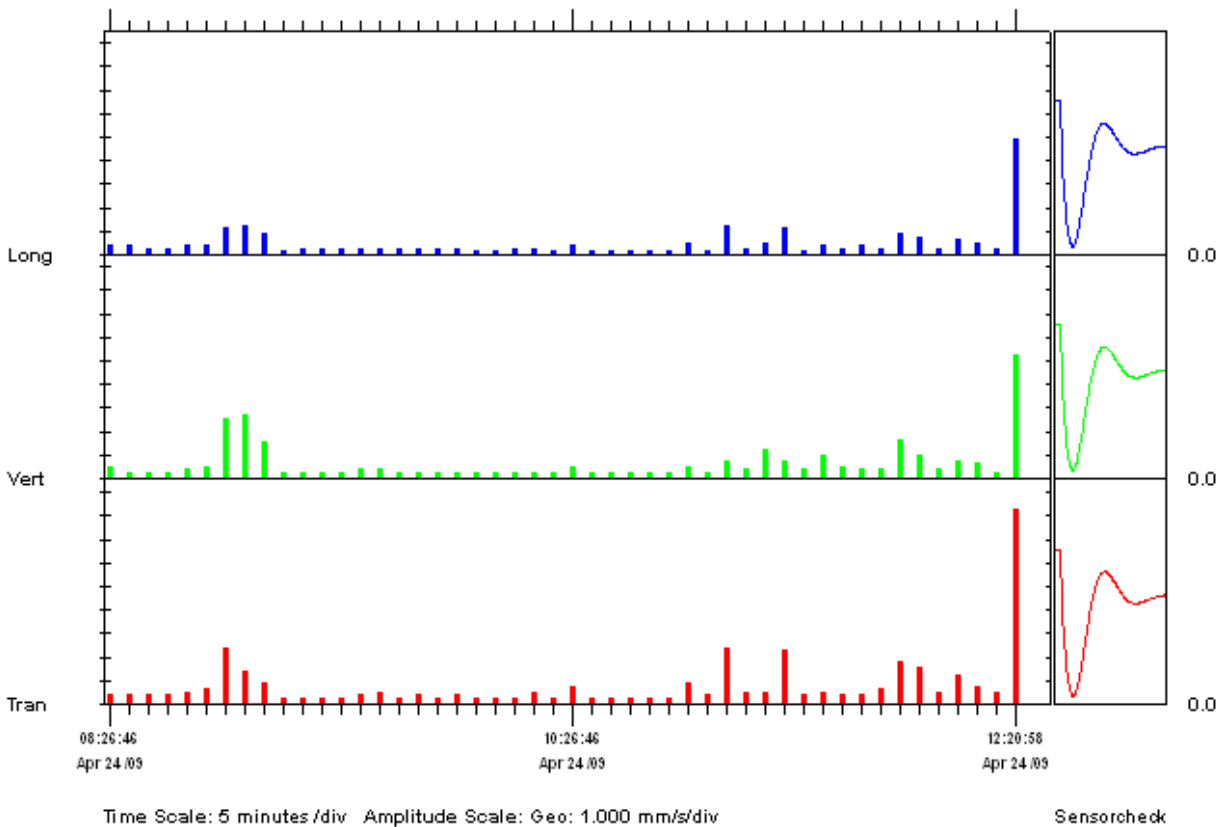
Location:
 Client:
 User Name:
 General:

Extended Notes

Post Event Notes

| | Tran | Vert | Long | |
|-----------------|------------|------------|------------|------|
| PPV | 8.25 | 5.21 | 4.95 | mm/s |
| ZC Freq | 57 | 64 | 85 | Hz |
| Date | Apr 24 /09 | Apr 24 /09 | Apr 24 /09 | |
| Time | 12:20:58 | 12:20:58 | 12:20:58 | |
| Sensorcheck | Passed | Passed | Passed | |
| Frequency | 7.3 | 7.3 | 7.4 | Hz |
| Overswing Ratio | 3.9 | 4.0 | 4.1 | |

Peak Vector Sum 9.89 mm/s on April 24, 2009 at 12:20:58



Date/Time Tran at 12:20:56 April 24, 2009
 Trigger Source Geo: 5.00 mm/s
 Range Geo :254 mm/s
 Record Time 2.0 sec at 1024 sps
 Job Number: 1

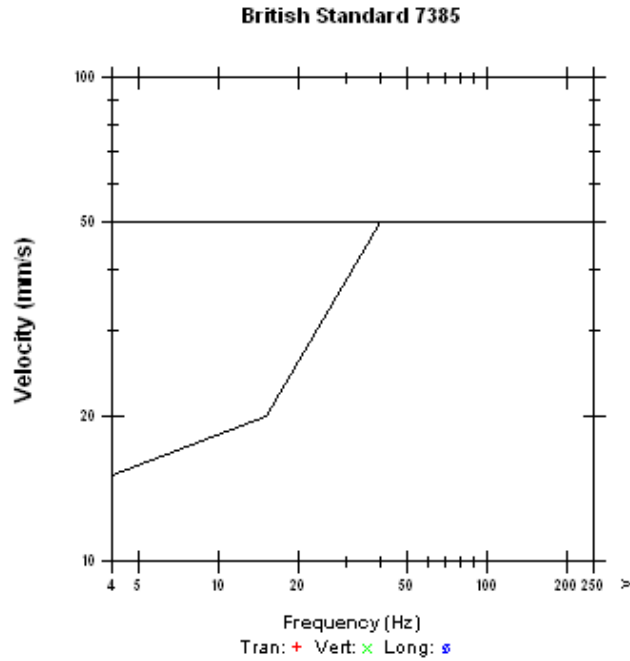
Serial Number BE12708 V 8.12-8.0 MiniMate Plus
 Battery Level 6.8 Volts
 Calibration October 1, 2008 by Instanter Inc.
 File Name N708CORJ.MWO

Notes
 Location:
 Client:
 User Name:
 General:

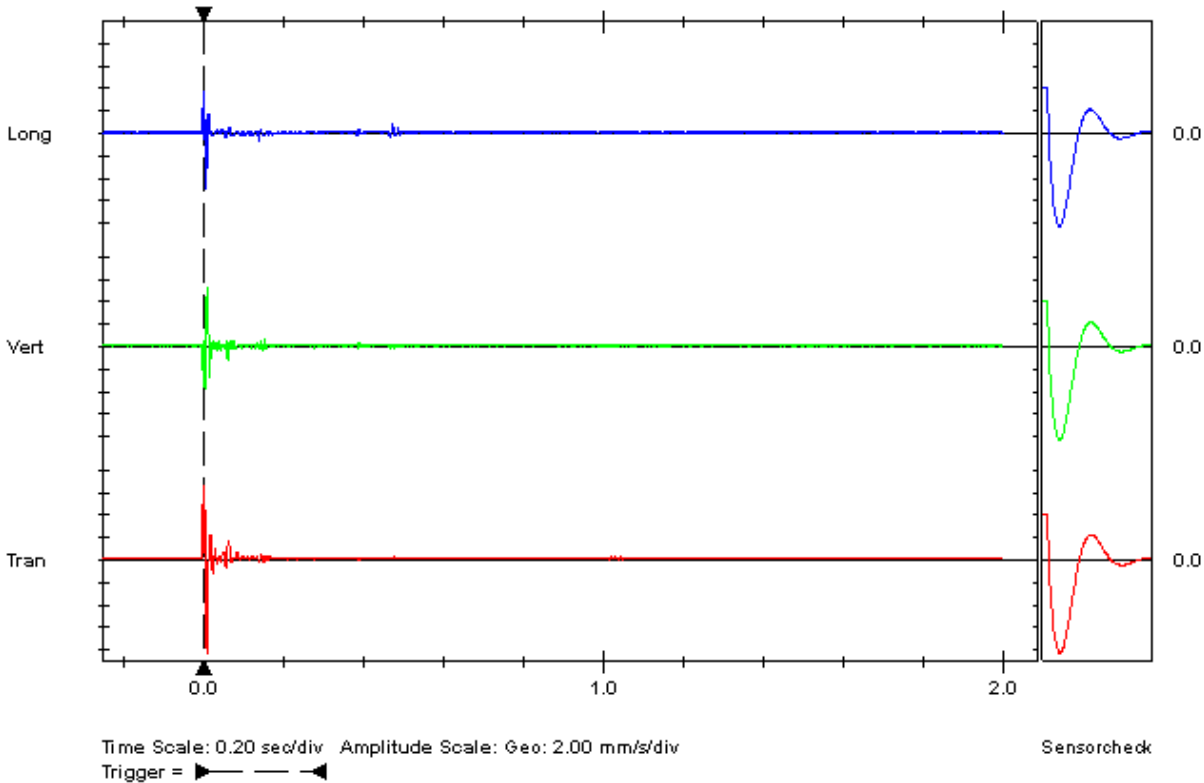
Extended Notes
 Combo Mode April 24, 2009 08:21:46

Post Event Notes

| | Tran | Vert | Long | |
|---------------------|--------|--------|---------|------|
| PPV | 8.25 | 5.21 | 4.95 | mm/s |
| ZC Freq | 57 | 64 | 85 | Hz |
| Time (Rel. to Trig) | 0.010 | 0.011 | 0.008 | sec |
| Peak Acceleration | 0.451 | 0.345 | 0.318 | g |
| Peak Displacement | 0.0189 | 0.0138 | 0.00850 | mm |
| Sensorcheck | Passed | Passed | Passed | |
| Frequency | 7.3 | 7.3 | 7.4 | Hz |
| Overswing Ratio | 3.9 | 4.0 | 4.1 | |



Peak Vector Sum 9.89 mm/s at 0.010 sec



Histogram Start Time 12:26:14 April 24, 2009
 Histogram Finish Time 21:42:28 April 26, 2009
 Number of Intervals 687 at 5 minutes
 Range Geo :254 mm/s
 Sample Rate 1024sps
 Job Number: 1

Serial Number BE12708 V 8.12-8.0 MiniMate Plus
 Battery Level 6.8 Volts
 Calibration October 1, 2008 by InstanTel Inc.
 File Name N708CORJ.VQO

Notes
 Location:
 Client:
 User Name:
 General:

Extended Notes

Post Event Notes

| | Tran | Vert | Long | |
|-----------------|------------|------------|------------|------|
| PPV | 0.889 | 1.40 | 1.02 | mm/s |
| ZC Freq | 73 | >100 | 73 | Hz |
| Date | Apr 24 /09 | Apr 24 /09 | Apr 24 /09 | |
| Time | 13:56:14 | 13:56:14 | 13:56:14 | |
| Sensorcheck | Passed | Passed | Passed | |
| Frequency | 7.3 | 7.3 | 7.4 | Hz |
| Overswing Ratio | 3.9 | 4.1 | 4.1 | |

Peak Vector Sum 1.89 mm/s on April 24, 2009 at 13:56:14

